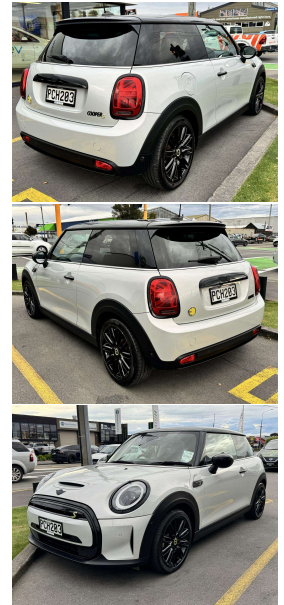
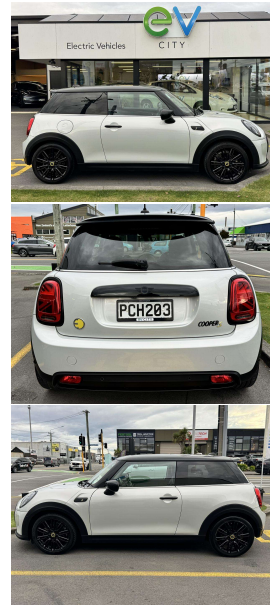


# 2022 Mini Hatch COOPER SE 135KW/EV



## VEHICLE INFORMATION

### Cash Price

Includes GST

Excludes on-road costs of \$200

**\$32,990**

Finance may be available on this vehicle.

Ask one of our friendly staff for more information.

**MARAC**



Gain peace of mind with Mechanical Breakdown Insurance. Ask us how.

### Body

3 door, Hatchback

### Odometer

35,417 km

### Engine

0 cc, Electric

### Fuel Type

Electric

### Transmission

Auto, Front Wheel

### Wheels

17.0000"

### VIN

WMW12DJ0302S10534

### Reg No.

PCH203

### Ext Colour

White Silver

### History

NZ New, 1 owner

### Seats

4 seats, Leather

### Interior

Black

### Audio

-

### Stock ID

5926

### Exterior Features

### Interior Features

### Mechanical Features



Electric & Hybrid Vehicles

Phone 03 972 5505, Email [contact@evcity.kiwi](mailto:contact@evcity.kiwi)  
158 Wordsworth Street, Sydenham, Christchurch 8023, New Zealand  
[www.evcity.kiwi](http://www.evcity.kiwi)